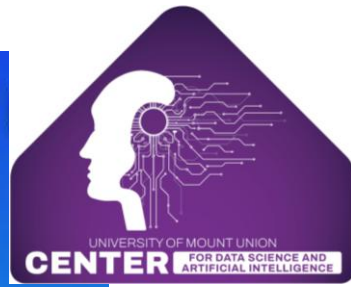




The Shift to Agentic AI: Building Your Autonomous Workforce

Loay Al-Zube, Ph.D.,
Professor of Engineering
and Director of Innovation
and AI Literacy, University
of Mount Union

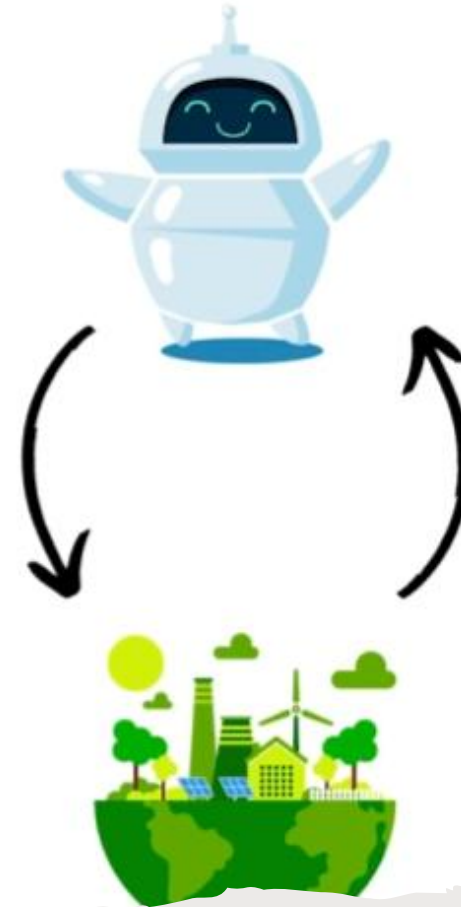




What Are Generative AI Agents?

What is an AI agent?

- an **autonomous** entity
- that **interacts** with its environment
- gets **feedback** from interactions
- to make **decisions**
- and achieve **goals**



Create marketing copy for our company Awesome Culture, a platform for planning virtual team bonding events.

Memory updated

Unleash the Power of Connection with Awesome Culture

In today's digital age, fostering a strong team spirit is more important than ever. At Awesome Culture, we believe that a cohesive, engaged team is the backbone of every successful organization. That's why we've created the ultimate platform for planning virtual team bonding events that are not only fun but also meaningful and impactful.

Why Choose Awesome Culture?

- Diverse Event Options:** From virtual escape rooms and trivia nights to cooking classes and wellness sessions, we offer a wide variety of events tailored to suit every team's unique preferences and needs.
- Seamless Planning:** Our user-friendly platform makes it easy to organize, customize, and manage your events, ensuring a smooth and stress-free experience from start to finish.
- Expert Facilitation:** Our experienced facilitators are dedicated to creating engaging and interactive experiences that promote teamwork, communication, and camaraderie.
- Tailored Solutions:** Whether you're a small startup or a large corporation, our scalable solutions can be customized to fit your team size, goals, and budget.

Interaction

Make it shorter for a social media post.

Boost Your Team Spirit with Awesome Culture!

Transform your remote team dynamics with Awesome Culture's virtual team bonding events! Choose from diverse activities like virtual escape rooms, trivia nights, cooking classes, and more. Enjoy seamless planning, expert facilitation, and customized solutions to fit your team's unique needs.

Unite your team, no matter where they are. Ready to get started? Visit [Awesome Culture](#) today!

#TeamBonding #RemoteWork #VirtualEvents #AwesomeCulture



team members no matter where they are in the world. Our local boundaries, making it easy to bring everyone together.

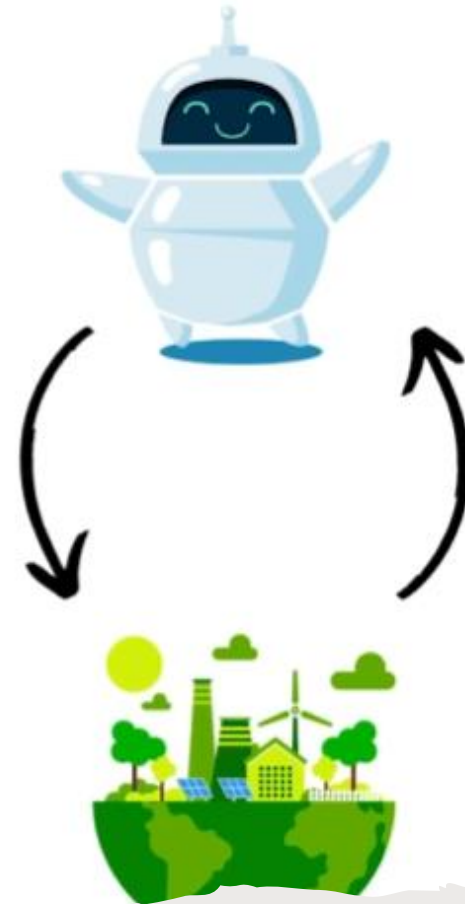
extensive catalog of virtual team bonding activities and your team's interests and objectives.

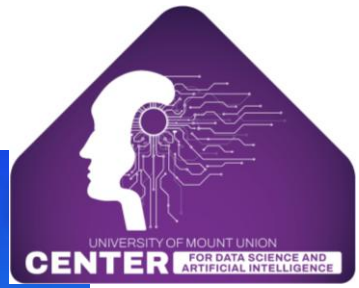
Our event planners will tailor the experience to your team's customized and engaging event.

Generative AI agent:

- powered by **gen AI**, such as LLMs
- an **autonomous** entity
- that **interacts** with its environment
- gets **feedback** from interactions
- to make **decisions**

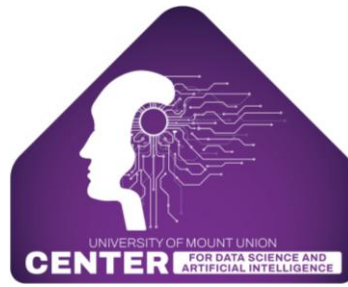
achieve **goals**





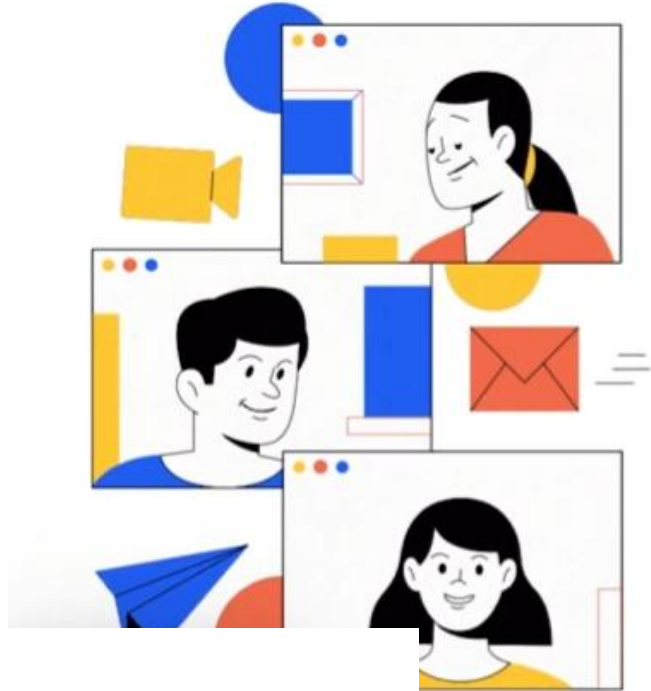
A Mental Framework for Creating Agents





Designing effective AI agents:

1. Identity
2. Memory
3. Planning
4. Narrow scope
5. Use of external tools
6. Collaboration with other agents



Identity



What is Llama3?

Searched 6 sites

Llama 3 is the latest version of Meta's open-source large language model (LLM) series, designed to enhance various AI-driven tasks and applications. It builds on the success of its predecessor, Llama 2, offering significant improvements in performance, scalability, and versatility. Here are some key highlights:

- Models and Parameters:** Llama 3 includes models with parameters ranging from 8 billion to 70 billion, available in both base (pre-trained) and instruct-tuned versions. These models are designed to run efficiently on a wide range of hardware, including consumer-grade GPUs (Facebook) (GitHub).
- Performance:** Llama 3 outperforms many competitors in specific benchmarks. For instance, it has shown better results than OpenAI's GPT-4 in the HumanEval coding benchmark, making it particularly strong in generating code. However, GPT-4 surpasses Llama 3 in the MMLU knowledge assessment (Hugging Face AI) (TechRepublic).
- Applications and Integration:** Meta has integrated Llama 3 into its suite of applications, such as Facebook, Instagram, WhatsApp, and Messenger, under the Meta AI brand. This integration allows users to perform various tasks, from planning events to generating images

ditionally, Llama 3 is accessible via platforms like Sage to leverage its capabilities for custom applications

is open-source, making it accessible to a wide range of users. This openness promotes innovation and allows developers to create custom solutions for their specific needs (GitHub) (Virtualization)

ward in the development of large language

Identity



You are a 6th grade science teacher. What is Llama3?

Hello, class! Today, we're going to learn about Llama 3. No, it's not an animal—Llama 3 is a type of computer program called an "artificial intelligence model" or AI model. AI models are like super-smart computer programs that can learn and do things that normally require human intelligence, like understanding language, answering questions, and even creating new things.

What Makes Llama 3 Special?

- Advanced Learning:** Llama 3 has been trained on lots of text from the internet, so it knows a lot about many different topics. This helps it answer questions, tell stories, and even help with homework.
- Many Versions:** Llama 3 comes in different sizes, which means there are versions of it that are smaller and easier to run on regular computers and bigger versions that are super powerful.
- Useful for Many Tasks:** People use Llama 3 to help with a variety of tasks. For example, it can help write emails, suggest recipes, or even generate art. Imagine having a really smart friend who can help you with almost anything!
- Free to Use:** Unlike some other AI models, Llama 3 is open-source. This means anyone can use it for free, which is great for students, teachers, and anyone who wants to try it out.
- Integration:** Llama 3 is also used in popular apps like Facebook, Instagram, and WhatsApp to make them smarter and more helpful.

In summary, Llama 3 is a powerful and versatile AI model that can do a lot of cool things. It's like having a smart helper that you can ask questions and get help from. Whether you need help with homework or just curious about something, Llama 3 is here to help!





Memory

- short term
- long term





Planning



Narrow Scope





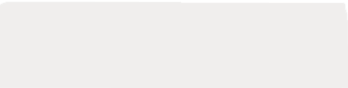
Tools





Collaboration





Designing effective AI agents:

1. Identity
2. Memory
3. Planning
4. Narrow scope
5. Use of external tools
6. Collaboration with other agents





How Can You Empower AI Agents with Tools?

External Tools



Alpha Vantage
Apify
ArXiv
AWS Lambda
Shell (bash)
Bearly Code Interpreter
Bing Search
Brave Search
ChatGPT Plugins
Connery Action Tool
Dall-E Image Generator
DataForSEO
Dataherald
DuckDuckGo Search
E2B Data Analysis
Eden AI
Eleven Labs Text2Speech
Exa Search
File System
Golden Query
Google Cloud Text-to-Speech
Google Drive
Google Finance
Google Imagen
Google Jobs
Google Lens
Google Places
Google Scholar

Google Trends
Gradlo
GraphQL
HuggingFace Hub Tools
Human as a tool
IFTTT WebHooks
Infobip
Ionic Shopping Tool
Lemon Agent
Memorize
Mojeek Search
Nuclia Understanding
NVIDIA Riva: ASR and TTS
OpenWeatherMap
Oracle AI Vector Search: Generate Summary
Quickstart
Polygon Stock Market API Tools
PubMed
Python REPL
Reddit Search
Requests
SceneXplain
Search Tools
SearchApi
SearxNG Search
Semantic Scholar API Tool
SerpAPI

Tavily Search
Twilio
Upstage
Wikidata
Wikipedia
Wolfram Alpha
Yahoo Finance News
You.com Search
YouTube
Zapier Natural Language Actions

External Tools

Look for tools with:

- Built in error handling
- Retry mechanisms
- Return helpful error messages





Question?





Build an Agent System for Sales Prospecting with Relevance AI



Generative AI Agents for Business Users



Build an Agent for Sales Prospecting with Relevance AI

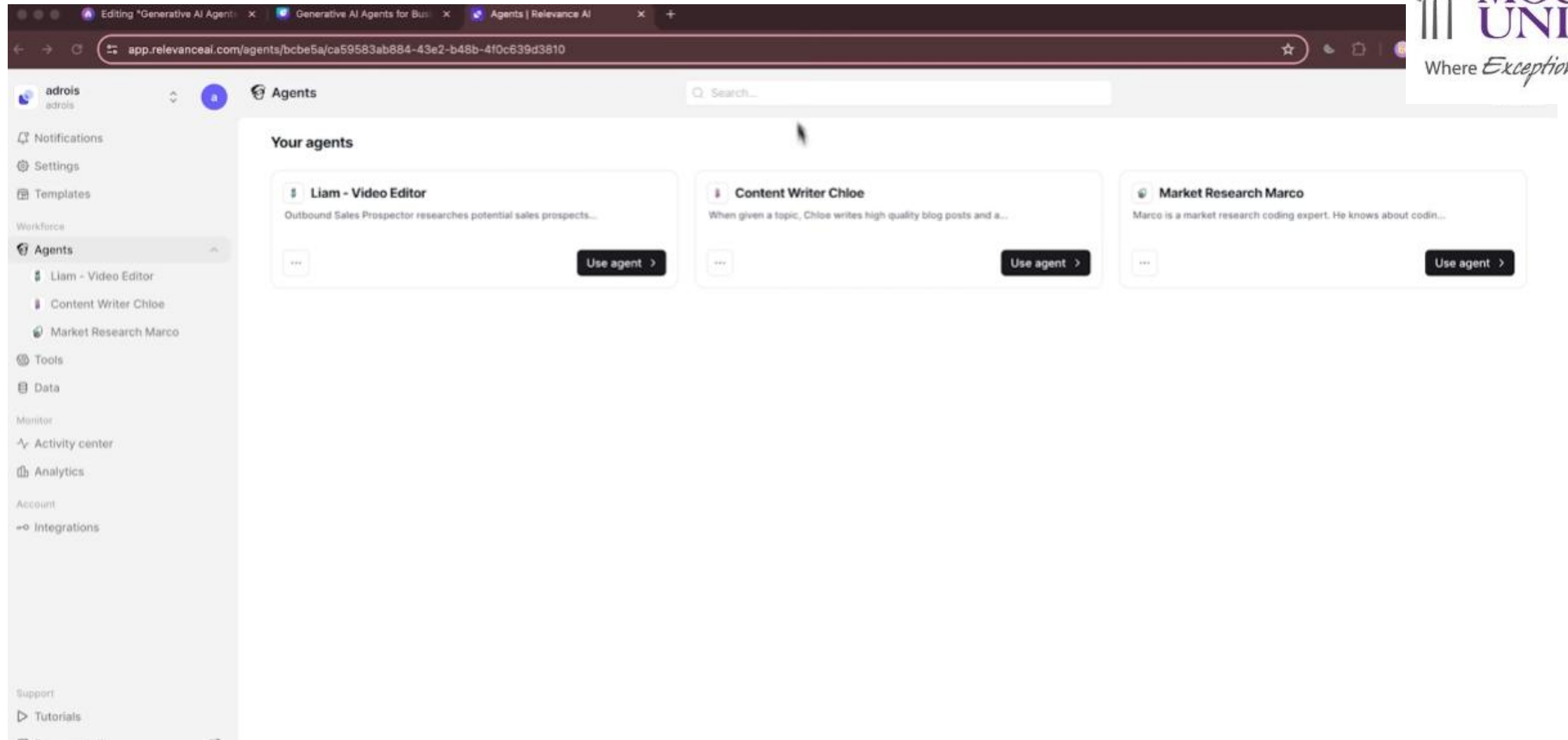
Prospecting typically involves:

- scraping a prospect's contact information
- researching the prospect's role and background
- writing a personalized email to appeal to the prospect, leveraging research from the previous step

Relevance AI

low-code platform to
build autonomous
AI agent teams

The screenshot shows the Relevance AI website homepage. At the top, there is a navigation bar with the Relevance AI logo and menu items: Product, Team, Agents, Resources, Enterprise, and Pricing. The main heading is "Build your AI Workforce" in a large, bold font. Below this, a sub-heading reads "Recruit teams of AI agents to complete tasks on autopilot. Grow your business, not your headcount." There are two buttons: "Try for free" and "Request demo". A small icon of a person with a speech bubble is visible on the right. Below the main heading, there is a horizontal menu with categories: Sales, Support, Research, Marketing, and Operations. The "Sales" category is selected. The main content area features the heading "Work every lead and scale your sales activity." followed by the text "Automate your sales process and turn leads into customers on autopilot." Below this, there is a list of features: "Nurture prospects", "Integrate with your tech stack", "Book meetings 24/7", and "Personalise your outreach". A "Learn more" link is at the bottom left. On the right, there is a vertical flowchart illustrating a sales process: "Receive lead" (with an email icon), "Lead research" (with a magnifying glass icon), "Personalised outreach" (with a LinkedIn icon), "Respond to objections" (with a speech bubble icon), and "Confirm/Book meeting" (with a calendar icon). A central illustration shows a person riding a rocket on a globe.



The screenshot shows a web browser window with three tabs: "Editing *Generative AI Agent...", "Generative AI Agents for Busi...", and "Agents | Relevance AI". The address bar shows the URL "app.relevanceai.com/agents/bcbe5a/ca59583ab884-43e2-b48b-4f0c639d3810". The page header includes the "adrois adrois" logo, a search bar, and the "Agents" title. A left sidebar contains navigation items: Notifications, Settings, Templates, Workforce, Agents (selected), Tools, Data, Monitor, Activity center, Analytics, Account, and Integrations. The main content area is titled "Your agents" and displays three agent cards:

- Liam - Video Editor**: Outbound Sales Prospector researches potential sales prospects... [Use agent >]
- Content Writer Chloe**: When given a topic, Chloe writes high quality blog posts and a... [Use agent >]
- Market Research Marco**: Marco is a market research coding expert. He knows about codin... [Use agent >]



Thank you!

Loay Al-Zube, Ph.D.,
Professor of Engineering
and Director of Innovation
and AI Literacy, University
of Mount Union

